



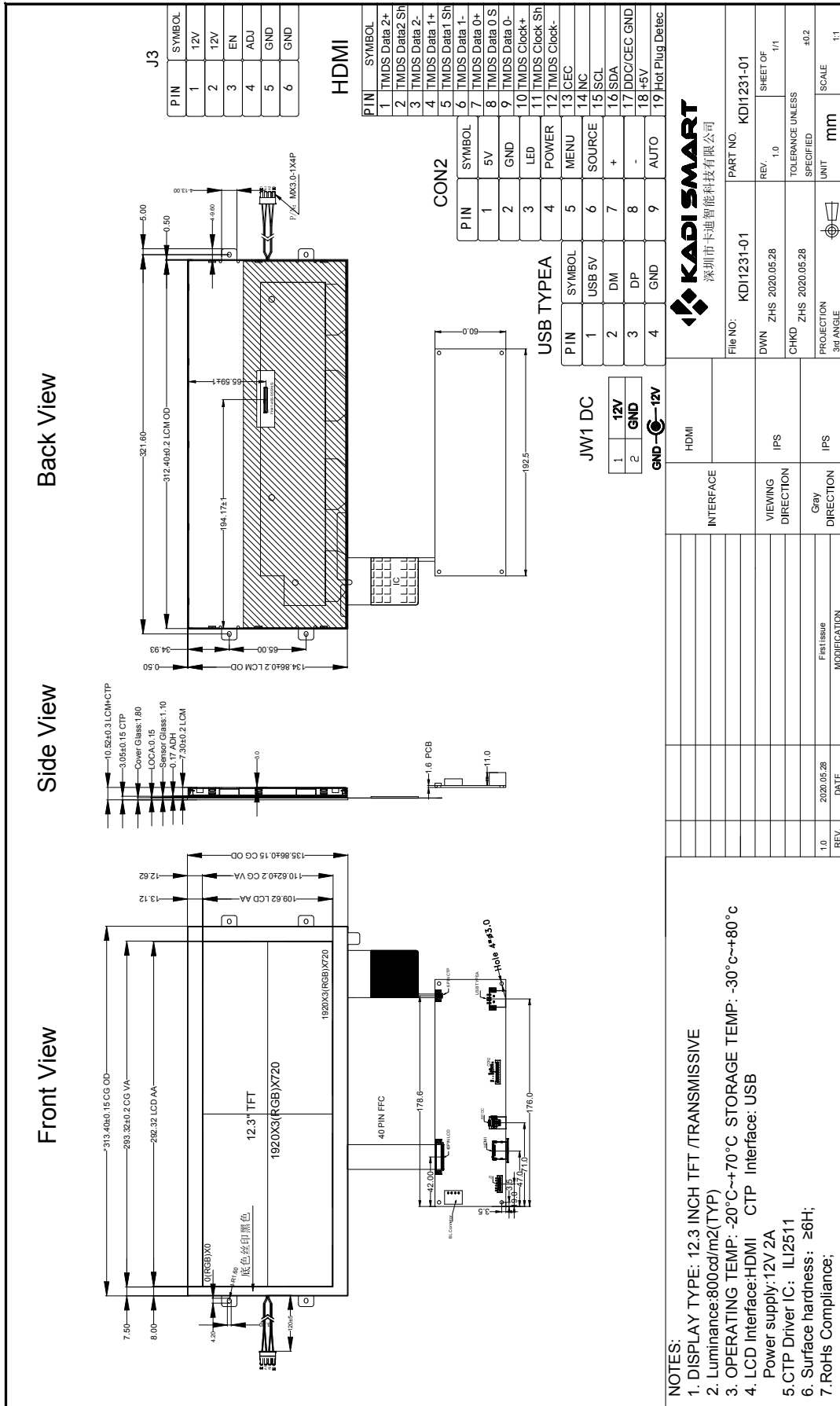
## 12.3 Inch HDMI



## 1. General Specifications

	Feature	Spec
Characteristics	Size	12.3 inch
	Resolution	1920(horizontal)*720(Vertical)
	Interface	HDMI
	Connect type	Connector
	Display Colors	16.7M
	Technology type	a-Si
	Pixel pitch (mm)	0.1523*0.1523
	Pixel Configuration	R.G.B.-Stripe
	Display Mode	Normally Black
	LCD Driver IC	TBD
	CTP Driver IC	ILI2511
	Viewing Direction	ALL
Mechanical	LCM (W x H x D) (mm)	313.40*135.86*10.52
	Active Area(mm)	292.32 *109.62
	With /Without TSP	With CTP
	Weight (g)	TBD
	LED Numbers	80 LEDS

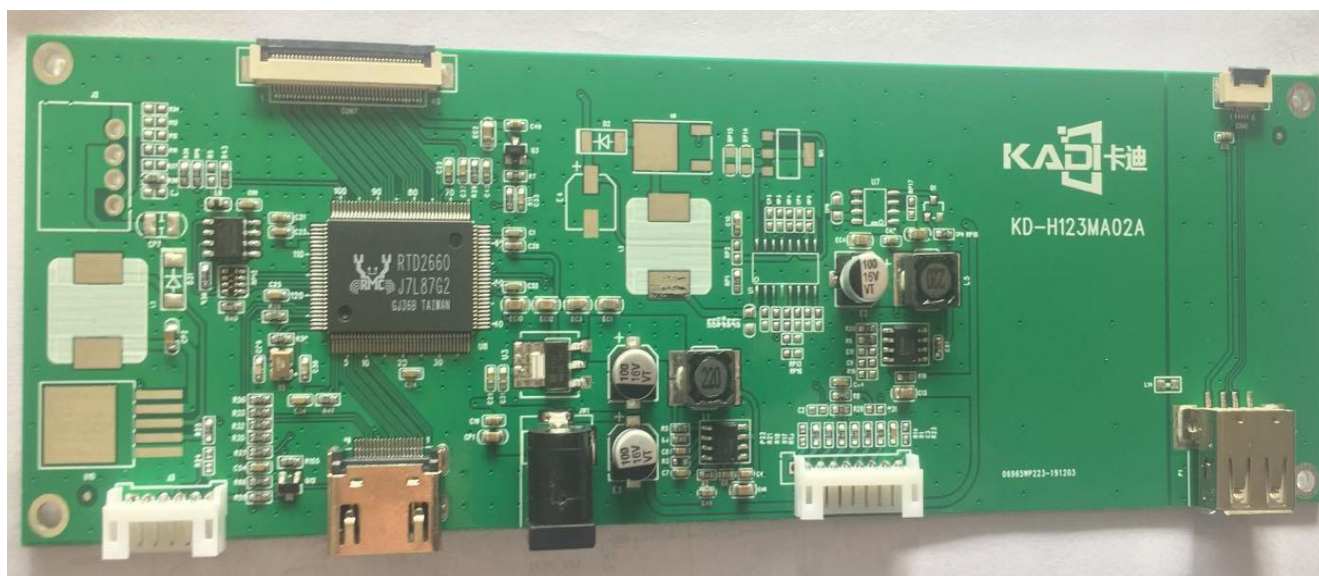
## 2. Drawing



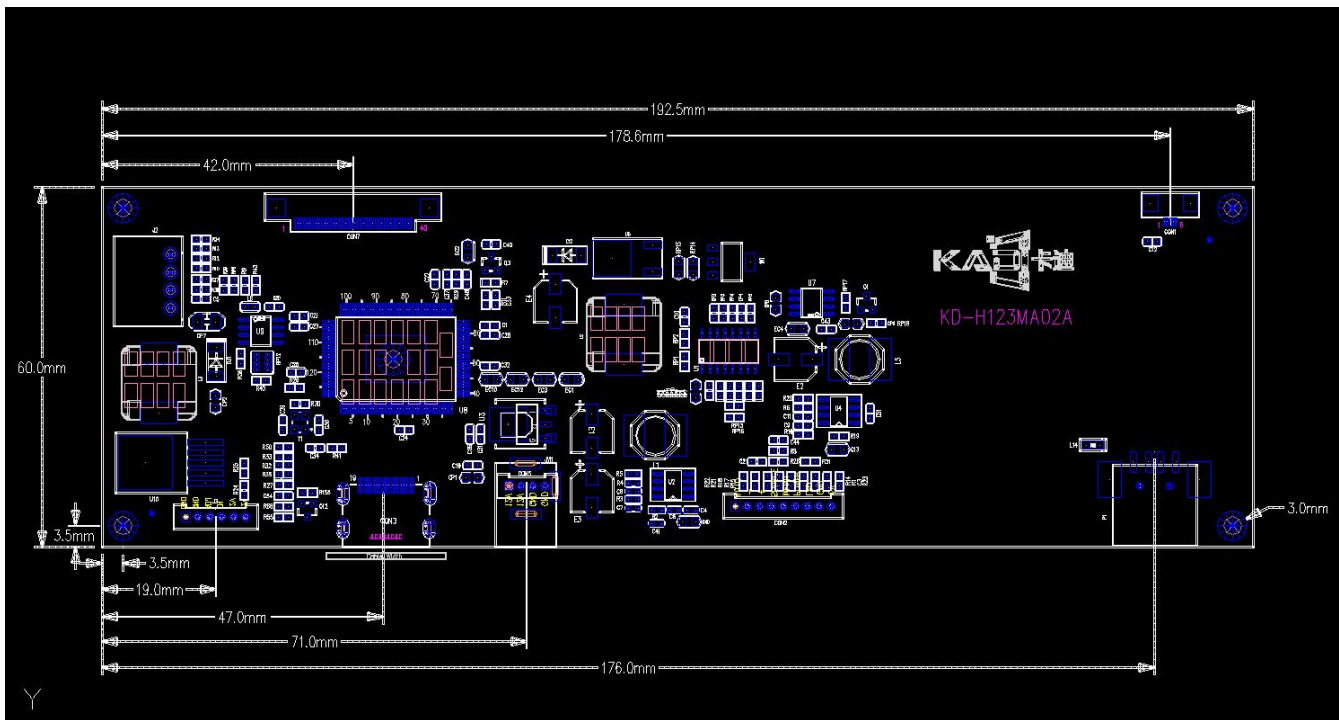
### 3. Electrical Characteristics

Item	Symbol	MIN	Typ	MAX	Unit
Operating Voltage	VDD	+10V	+12	+14	V
Operating Current	I <sub>dd</sub>	1300	1500	1700	mA
Operating Temperature	TOPR	-20	-	70	°C
Storage Temperature	TSTG	-30	-	80	°C
Life time			30000		Hrs

### 4. Product outline structure



## 5. Physical drawing



## 6. PIN-MAP

### POWER CONNECTOR

DC JACK :DC005 (5.5-2.1MM)

Pin	Signal	Description
1	VDD	Power supply +12V
2	GND	GND

### TOUCH CONNECTOR

USB : TYPE A USB

USB TYPE A

Pin	Signal	Description
1	USB 5V	Power supply 5V
2	DM	Data-
3	DP	Data+
4	GND	Ground

## HDMI CONNECTOR

HDMI : HDMI-019S

Pin	Signal	Description
1	TMDS Data 2+	TMDS Transition differential signal 2+
2	TMDS Data2 Sh	Data2 Shielding ground
3	TMDS Data 2-	TMDS Transition differential signal 2-
4	TMDS Data 1+	TMDS Transition differential signal 1+
5	TMDS Data1 Sh	Data1 Shielding ground
6	TMDS Data 1-	TMDS Transition differential signal 1-
7	TMDS Data 0+	TMDS Transition differential signal 0+
8	TMDS Data 0 S	Data0 Shielding ground
9	TMDS Data 0-	TMDS Transition differential signal 0-
10	TMDS Clock+	TMDS Transition differential signal Clock+
11	TMDS Clock Sh	Clock Shielding ground
12	TMDS Clock-	TMDS Transition differential signal Clock-
13	CEC	Electronic protocol CEC
14	NC	NC
15	SCL	I2C Clock Line
16	SDA	I2C DATA Line
17	DDC/CEC GND	Data display channel
18	+5V	+5V Power
19	Hot Plug Detec	Hot Plug Detec

## OSD KEY CONNECTOR

OSD:8P-2.0MM

Pin	Signal	Description
1	MENU	Popup menu KEY
2	PWR	Power KEY
3	EXIT	Exit KEY
4	UP	Up KEY
5	DOWN	Down KEY
6	LED	LED control
7	GND	Ground
8	VCC	KEY board POWER

---

**BACKLIGHT CONNECTOR**

Backlight:6P-2.0MM

<b>Pin</b>	<b>Signal</b>	<b>Description</b>
1	VIN	POWER +12V
2	VIN	POWER +12V
3	EN	Backlight Enable
4	ADJ	Backlight adjusting brightness
5	GND	GND
6	GND	GND

## 7. Block Diagram

